

Lanesville Elementary Weekly Newsletter

July 26th - July 28th

SCHOOL INFORMATION:

Principal- Jeff Smitley

2725 Crestview Avenue. NE
Lanesville, IN 47136

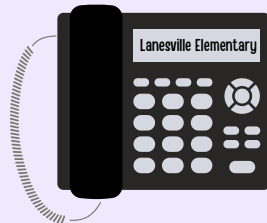
LES Main Line- (812) 952-3000

[Lanesville Elementary Website](#)



SCHOOL ATTENDANCE POLICY:

Please call the school office by 9:00 AM if your child will be absent, or tardy beyond 9:00 AM. You may leave a message with your name, the student's name, and the reason for the absence.



(812) 952-3000
EXT 100

SCHOOL HOURS:

MONDAY-THURSDAY

7:30 AM - Doors open
7:55 AM - School day begins
2:45 PM - Car Rider Dismissal
2:55 PM - Bus Rider Dismissal

FRIDAY (EARLY DISMISSAL)

7:30 AM - Doors open
7:55 AM - School day begins
2:15 PM - Car Rider Dismissal
2:25 PM - Bus Rider Dismissal

The school day begins promptly at 7:55AM. If your student arrives at school after the 7:55AM bell has rung, they will need to be signed into the office by an adult and will be counted as tardy.

PRINCIPAL'S MESSAGE:

Thank you to our students, families, and staff for making the first three days of school a great success! We are looking forward to the wonderful growth we will see in our students this year!

-Mr. Smitley



SOARING EAGLES

Teachers and staff are always looking to nominate students who are exhibiting EAGLE EXPECTATIONS. Each week, multiple students are highlighted for their accomplishments. They are celebrated over the morning announcements and are invited to sign Mr. Smitley's "Wall of Soaring Eagles!"

THIS WEEK'S SOARING EAGLES ARE:

STUDENT:

Cara Wilkerson
Ada Hussung
Effie Stumler
Bexlee Roberts
Maddison Hill
Khloe Hill
Henry Lindquist
Jaelynn Stocks
Ariana Bolen

NOMINATED BY:





Mrs. Steele
Mrs. Dye
Mrs. Moore
Mrs. Doughty
Mrs. Steele
Mrs. Steele
Mrs. Chuprinskis
Mrs. Drexler
Mrs. Tobbe

CAR RIDER INFORMATION:

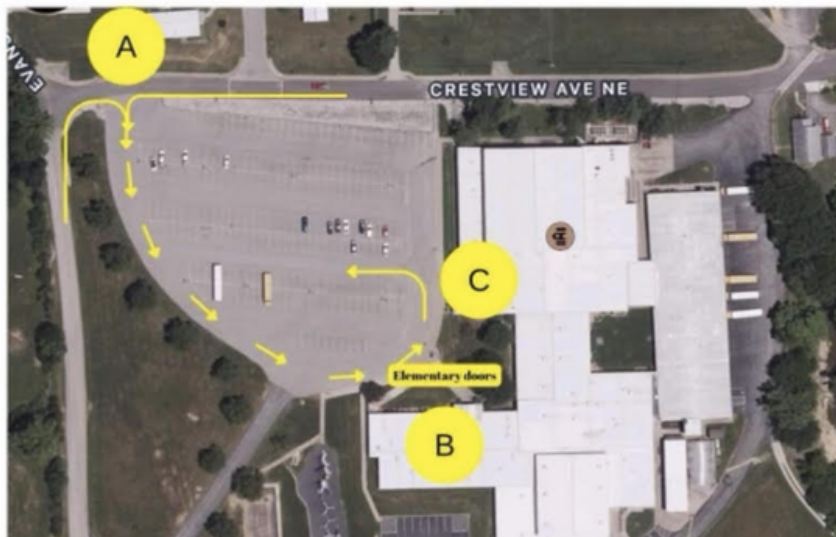


LANESVILLE ELEMENTARY

Car Rider drop off Guide

-  When entering the parking lot (spot A), take turns with oncoming traffic.
-  Do not stop in front of Elementary doors (spot B).
-  Please pull all the way forward to the next available spot (think of this as a drive thru line). All the way up to right before the high school doors. (Spot C)
-  Your child should be ready to get out of the car as soon as you stop (backpacks on, lunches and projects in hand, etc.). Say your goodbyes before your turn to unload – this will help keep cars moving in line.

Parents are to remain inside their cars— do not leave car unattended.



SCHOOL ATHLETIC INFORMATION:

5TH/6TH GRADE BASKETBALL

For those interested in playing Lady Eagles Basketball this year for 5th/6th grade, our practices will start August 7th 5-7 pm in the Elementary Gym. Please bring water bottle, hair ties, and the desire to have fun and learn. You must have a physical submitted via Final Forms before participating. For information regarding Final Forms and creating an account, please contact our Athletic Director, Zach Payne.

If you are interested and unable to make it on this day or have any questions please send a text to the coaches.
Thanks. Coach Eric Hess 812-207-3943 Coach Cindy Willoughby 812-736-1734

JR. HIGH CROSS COUNTRY

Jr High Cross Country practice will begin Monday 4:30-6pm and will practice M-F. Coach Petty will send communication out to those that have indicated in Final Forms. This is available for 5th and 6th grade boys and girls. You must have a physical submitted via Final Forms before participating. For information regarding Final Forms and creating an account, please contact our Athletic Director, Zach Payne.

JR. HIGH TENNIS

Tennis practice starts Monday July 31st. Practices will be from 3-4:30 pm Monday through Thursday and from 2:30-3:30 on Fridays. This is available for 5th and 6th grade boys. You must have a physical submitted via Final Forms before participating. For information regarding Final Forms and creating an account, please contact our Athletic Director, Zach Payne.

PICTURE DAY:



Picture Day is
WEDNESDAY, AUG. 9th

Order before Picture Day to receive free shipping to the school. Use the link below to place your order!

[ORDER HERE](#)

The school's order code is:
78011CF

CAFETERIA NEWS:

Happy New School Year!

We take great pride in being able to offer your student healthier food choices to fuel their bodies to get them through the school day. Our meals are designed to offer a wide variety of healthy options that include seasonal fresh fruits and vegetables, fat free and low- fat flavored milk, and whole grain-rich foods. Not only are they healthy, they are tasty too!

Please take a moment to review some important information that will assist you in successfully navigating the food service program offered at the Lanesville Community School. If you do have any questions, please feel free to contact me by phone or email.

How much are meals? All Student breakfast - \$1.80, Elementary lunch - \$2.70

POINT OF SALE (POS): The LCS uses a Point of Sale "POS" debit system for lunch purchases. The POS systems allows you to prepay for your student's lunch and/or ala carte purchases.

Three ways to Pre- Pay:

1. On-line payment can be made by accessing your child's Harmony account.
2. Checks made payable to the LCS Lunch Program can be brought in by your child. One check per family can be split between your children. Please make note of how you would like the funds distributed.
3. Cash must be sealed in an envelope. Include student's name, classroom and ID number on the outside of the envelope.

What if your student's account is negative? Even if their account has a negative balance, your student will NEVER be denied a student meal. However, students with a negative account, will not be allowed to charge/purchase "a la carte" items including extra entrees. (No Exceptions)

How to get meal assistance? Parents/guardians may apply at anytime during the school year for free or reduced meals. Please apply on line using your student's Harmony account or contact the cafeteria for an application.

Sandy Denny LCS Cafeteria Manager /FSD 812-952-2555 Ext 250 dennys@lanesville.k12.in.us

Understanding the Lunch Line: A Parent's Guide

Each day, your child is offered a lunch containing the following:

Meat or Meat Alternate,
Grain,
Fruit, Vegetable
and of course, Milk!

While the most nutritious lunch contains all of these options, we understand that sometimes our students do not like some of the items we serve. To make our student customers happy, we like to give them the option to decline items they do not want to eat.

Out of the 5 food groups your student is offered, he must choose at least 3 food groups for his meal. One of the food groups must be a **fruit** or **vegetable**. Some of the menu choices may count as two food groups such as pizza, nachos, cheeseburger, or chef salad!

Here's an example menu:

Cheeseburger on a **Bun**
1/2 cup **Carrots**
1/2 cup **French Fries**
1/2 cup **Peaches**
8oz of **Milk**

So, your child *could* choose:

Cheeseburger on a **Bun** and **Fries**
Carrots, Peaches and **Milk**
Cheeseburger on **Bun, Peaches** and **Milk**
Of course they can take other combinations or all 5 food groups!
The choice is up to them!

If your child comes home and says she didn't get enough to eat at lunch, ask if she is taking all of her **fruit** and **vegetable** choices!

COMMUNITY INFORMATION:



LANESVILLE HERITAGE WEEKEND PRINCESS PAGEANT

SEPTEMBER 8TH, 2023

SPECIAL MEDIA COVERAGE BY:

extol

MAGAZINE

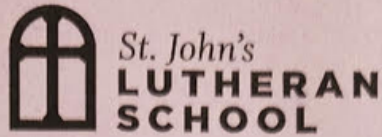
☎ 812-725-6176 (Shelby Ferree)

🌐 Lanesvilleheritageweekend.com

✉ Lhwqueenandprincess@gmail.com

The Princess Padget is open to all girls ages 4-7

COMMUNITY INFORMATION:



AFTERCARE

2023—2024

1507 St. John's Church Rd. NE Lanesville, IN 47136

812-952-2737

school@stjohnslanesville.com

Aftercare Program

2:45pm—5:30pm Monday—Thursday
2:15pm—5:30pm Friday

Aftercare Tuition:

K—12 years old: (per student)	\$300.00/month \$3,000.00/annually	10 months/Aug—May 37 weeks
----------------------------------	---------------------------------------	-------------------------------

Aftercare Deposit: \$100.00/family (annually)

*A non-refundable deposit of \$100.00 is required at time of application to secure placement, and will be deducted off the first months tuition in the fall.

*Prices do not include Fall Break, Christmas Break, Spring Break or Summer.

*Tuition is due regardless of attendance. A two-week notice is appreciated to un-enroll in the program.

*Bus service is included for Lanesville students in the afternoon.

***Full time preschool students that attend St. John's, tuition is included with the above pricing.**

COMMUNITY INFORMATION:

Raising Our Children's Kids R.O.C.K

**For Grandparents
As Parents**

COME AND JOIN US!

WHEN: WEDNESDAYS STARTING
AUGUST 16, 2023

WHERE: HARRISON COUNTY
PUBLIC LIBRARY
105 N CAPITOL AVE.

CORYDON, IN 47112

TIME: 9:30-11:30 AM

Grandparents, foster parents, or
other family members who are now
the primary caregiver for children;
please join us for support,
fellowship and information that is
vital for the journey you are on.

For more information please
contact:

Kathy Sampson
k.sampson.ourplace@gmail.com
(812) 945-3400

**Our
Place**
Drug & Alcohol
Education Services, Inc.

Align
Southern
Indiana

Funding provided by




CAFETERIA MENUS:

<div>  BREAKFAST </div> <div> AUGUST 2023 Lanesville Community School Menu subject to change </div> <div> LES Breakfast 1.80 LHS Breakfast 1.80 Adult breakfast 2.50 </div>				
Monday	Tuesday	Wednesday	Thursday	Friday
	Chocolate chip muffin 1 Assorted WG Cereal Pop tart Fruit cup Fresh fruit & Milk	Bacon Egg Biscuit 2 Assorted WG Cereal Crunch mania Apple sauce, fruit juice Fresh fruit & Milk	Donut stick 3 Assorted WG Cereal Pop tart Fruit cup Fresh fruit & Milk	Sausage biscuit 4 Assorted WG Cereal Pop tart Apple sauce, fruit juice Fresh fruit & Milk
Pop dogs 7 Assorted WG Cereal Glazed WG Donuts Apple sauce, fruit juice Fresh fruit & Milk	Chocolate chip muffin 8 Assorted WG Cereal Pop tart Fruit cup Fresh fruit & Milk	Bacon Egg Biscuit 9 Assorted WG Cereal Donut stick Apple sauce, fruit juice Fresh fruit & Milk	Yogurt parfait 10 Assorted WG Cereal Blue berry muffin Fruit cup Fresh fruit & Milk	Sausage biscuit 11 Assorted WG Cereal Pop tart Apple sauce, fruit juice Fresh fruit & Milk
Pop dogs 14 Assorted WG Cereal Glazed WG Donuts Apple sauce, fruit juice Fresh fruit & Milk	Chocolate chip muffin 15 Assorted WG Cereal Pop tart Fruit cup Fresh fruit & Milk	Bacon Egg Biscuit 16 Assorted WG Cereal Donut stick Apple sauce, fruit juice Fresh fruit & Milk	Chocolate chip muffin 17 Assorted WG Cereal Pop tart Fruit cup Fresh fruit & Milk	Sausage biscuit 18 Assorted WG Cereal Pop tart Apple sauce, fruit juice Fresh fruit & Milk
Pop dogs 21 Assorted WG Cereal Glazed WG Donuts Apple sauce, fruit juice Fresh fruit & Milk	Chocolate chip muffin 22 Assorted WG Cereal Pop tart Fruit cup Fresh fruit & Milk	Bacon Egg Biscuit 23 Assorted WG Cereal Donut stick Apple sauce, fruit juice Fresh fruit & Milk	Yogurt parfait 24 Assorted WG Cereal Blue berry muffin Fruit cup Fresh fruit & Milk	Sausage biscuit 25 Assorted WG Cereal Pop tart Apple sauce, fruit juice Fresh fruit & Milk
Pop dogs 28 Assorted WG Cereal Glazed WG Donuts Apple sauce, fruit juice Fresh fruit & Milk	Chocolate chip muffin 29 Assorted WG Cereal Pop tart Fruit cup Fresh fruit & Milk	Bacon Egg Biscuit 30 Assorted WG Cereal Donut stick Apple sauce, fruit juice Fresh fruit & Milk	Chocolate chip muffin 31 Assorted WG Cereal Pop tart Fruit cup Fresh fruit & Milk	

<div>  LUNCH </div> <div> AUGUST 2023 Lanesville Community School Menu subject to change </div> <div> LES Lunch \$2.70 LHS Lunch \$2.80 Adult Meals \$4.75 Ala carte prices are posted in cafeteria Fruit cup & milk offered daily </div>				
Monday	Tuesday	Wednesday	Thursday	Friday
	Nacho supreme 1 Corn dogs French fries Refried beans Tossed salad Fresh fruit	Chicken strips 2 Hot dog on bun Roasted Turkey Mashed potatoes Broccoli Tossed salad & Fresh fruit	Chicken tetrazzini w/bread 3 BBQ Riblet on bun Breaded Chicken Sandwich Corn, Green beans Tossed Salad Fresh Fruit	Papa Johns Pizza 4 Cheeseburger PBJ or Sub sandwich French Fries, Veggie sticks Tossed Salad Fresh fruit & Juice
Pretzel w/cheese 7 Sloppy Jo on bun Ham Sandwich Baked potato, glazed carrots Tossed Salad Fresh fruit	Taco 8 Mini corn dogs French fries, Mexican rice Black beans, Veggie sticks Tossed salad Fresh fruit & Juice	Popcorn chicken 9 Hot dog on bun Salisbury steak w/roll Mashed potatoes Broccoli Tossed salad & Fresh fruit	Spaghetti w/bread 10 Breaded chicken sandwich Corn, Green beans Tossed Salad Fresh Fruit	Papa Johns Pizza 11 Cheeseburger PBJ or Sub sandwich French Fries, Veggie sticks Tossed Salad Fresh fruit & Juice
Pepperoni pizza 14 Spicy chicken sandwich Turkey & cheese sandwich Cheesy potatoes, Lima beans Tossed Salad Fresh fruit	Chicken fajita 15 Grilled cheese Hamburger on bun French fries, sweet peas Tossed salad, veggie sticks Fresh fruit & Juice	Chicken Nuggets 16 Hot dog on bun Breaded Pork w/roll Mashed potatoes Broccoli Tossed salad & Fresh fruit	Orange chicken w/rice 17 BBQ Riblet on bun Breaded Chicken Sandwich Corn, Green beans Tossed Salad Fresh Fruit	Papa Johns Pizza 18 Cheeseburger PBJ or Sub sandwich French Fries, Veggie sticks Tossed Salad Fresh fruit & Juice
Fish sticks w/roll 21 Pulled Pork on bun Ham Sandwich Mac & cheese, mixed vegetable Tossed salad Fresh fruit	Nacho supreme 22 Corn dogs French fries Refried beans Tossed salad Fresh fruit	Chicken strips 23 Hot dog on bun Meatloaf w/roll Mashed potatoes Broccoli Tossed salad & Fresh fruit	Spaghetti w/bread 24 Breaded chicken sandwich Corn, Green beans Tossed Salad Fresh Fruit	Papa Johns Pizza 25 Cheeseburger PBJ or Sub sandwich French Fries, Veggie sticks Tossed Salad Fresh fruit & Juice
Scrambled egg w/biscuit 28 Spicy chicken sandwich Turkey & Cheese Sandwich Potato tots, Baked beans Tossed salad Fresh fruit	Taco 29 Mini corn dogs French fries, Mexican rice Veggie sticks Tossed salad Fresh fruit & Juice	Popcorn chicken 30 Hot dog on bun Country fried steak w/roll Mashed potatoes Broccoli Tossed salad & Fresh fruit	Chicken tetrazzini w/bread 31 BBQ Riblet on bun Breaded Chicken Sandwich Corn, Green beans Tossed Salad Fresh Fruit	

Dates to Remember:

AUGUST 2023

Sunday	Monday	Tuesday	Wednesday	Thursday	Friday	Saturday
		1	2	3	4	5
6	7	8	9 PICTURE DAY! 	10	11	12
13	14	15 School board Mtg 7 PM Cafeteria PTSO Mtg 6 PM Library	16 Jr.High Tennis HOME @ 5PM vs. Scribner Middle School	17	18	19 Jr.High Cross Country TBD
20	21 Jr.High Cross Country @ Silver Creek 5PM Jr.High Tennis @ East Wash 5 PM	22	23 Jr.High Tennis @ South Central Jr/HS 430 PM	24 Jr.High Cross Country @ North Harrison Middle School 6 PM	25	26 Jr.High Cross Country @ St. John's Lutheran School 930 AM
27	28	29 Jr.High Tennis HOME @5 PM vs. Corydon Central Middle School	30 Jr.High Cross Country @ Highland Hills Middle School 5PM Jr.High Tennis @ Borden HS 530 PM	31 Jr.High Tennis HOME @ 5PM vs. Crawford Co. Jr. High School		